

## NETWORKS

LiberRATE is suitable for network installation if you have been supplied with the multi-user version.

## WARNINGS

### IF YOU ARE UPGRADING FROM VERSION 3

- If you are upgrading from V3, please run a check and repair on your data before starting the installation. The instructions are in the support section of our website.
- If you are reinstalling we strongly recommend that you make a backup copy of your existing Jobs and Library databases. The installer is designed not to overwrite existing database files but why take a chance? Make a back-up

## INSTALLATION FILES

- Please download the latest files from our website using the links given to you. Files which you have downloaded previously may have been updated.

## ACTIVATION

- Your Licence must be activated before you can run the program.
- Please note that this programme has a copy protection facility.
- A verification email will be sent to the address you register. If you do not receive this please check your Junk mail box or call us.

## OVERVIEW OF PROCEDURE

The multi user version is delivered in two files.

Server installation: This must be installed to a shared drive running Windows software. It is not suitable for installation on attached devices

### File 1 is installed as one of two options below

File name: libr\_mus\_install\_4.exe (mus =multi user server)

#### 1A Option A Standard Servers

Read section A below if you will be installing your software onto a standard network server or where you have multiple PCs connected together over a network and a PC is designated as a server. You can ignore Option B

#### 1B Option B Terminal server installation

Users can log in remotely or users working in an office environment will connect to their data over a conventional network with the added benefit of remote login. You must have a Terminal server to use this option. If you are not sure use Option A

### 2 Client installation for all users.

File name: libr\_muc\_install\_4.exe (muc =multi user client)

File 2 is installed to all machines which will be used by each user to access the LiberRATE Jobs and Library databases.

This is installed on each client PC with its own licence.

## Other information before starting

- You may need Administrator rights to install on a network.
- The installation folder for the databases must be set to share
- Read /Write access should be set automatically for the LiberRATE data folders.

## **CLARIFICATIONS:** *(we may have mentioned this previously)*

### Server

- The server file is installed on the server machine and contains the databases. The Server file should only be installed once initially.
- Any updates issued by LiberRATE are designed not to reinstall the database files but to only update the server software.
- It is however advisable that before reinstalling the Multi user server (MUS) program that the databases are backed up to prevent loss of data.

### Client

- Used for all standard installations
- The Client files are installed on each separate client machine and point to the shared databases.
- Each client has a separate licence.

### Terminal server installation

1. Where a terminal server is used to login from outside the office environment, a desktop shortcut on the terminal server allows a maximum number of simultaneous licenced users to login.
2. This desktop shortcut is added by the administrator to the libr\_mus.exe file installed in the LiberRATE program folder on the terminal server and requires its own licence key if this type of system is being used.

INSTALLATION PROCEDURE – MULTI-USER EDITION FOR NETWORKS
--

## **SERVER FILE INSTALLATION**

There are two types of installation options.

- If you are installing a standard Windows server use Option A. (This is the most likely option)
- If to are installing to a Terminal server or a LAN use option B

### **OPTION A:**

For Normal Windows Server installations:

1. The server file must be installed first.
2. Run the file libr\_mus\_install\_4.exe at the server machine.
3. You cannot run the server file using an UNC path ([\\Server](#)). You must install at the server or user remote desktop.
4. The Program will be installed by default to C:\Program Files (x86)\LiberRATE\LiberRATE MUS. You can vary the default program files path.
5. On the next dialogue you will see a dropdown box "Install database files only". Accept this if you are installing to a normal server.
6. Note for reinstalling: LiberRATE will not reinstall new databases if it detects a Jobs and Library folder. We do suggest however that you make a backup for security of your data if reinstalling
7. The data files containing all user created data will be installed to a folder of the user's choice on the server machine. Its best to pre-create this folder (e.g. LiberRATE V4 Data) but you can make a new folder at this point.
8. Choose empty or sample databases. (Existing databases will not be overwritten but it's best not to take a chance Please make a backup of Jobs and Library folders)
9. The installation will complete.
10. You must now install The Multi user client on each client machine. See below go to Section 2

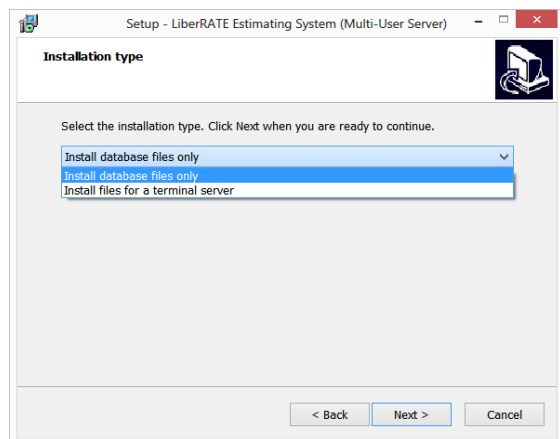
### **OPTION B: SKIP IF YOU HAVE USED OPTION A**

Only for Terminal server installation or if you have been instructed by LiberRATE to do so. Choose the Terminal server option from the Select database files dropdown when asked.

Before installing this option please ensure that we have supplied you with a licence key configured for Terminal servers.

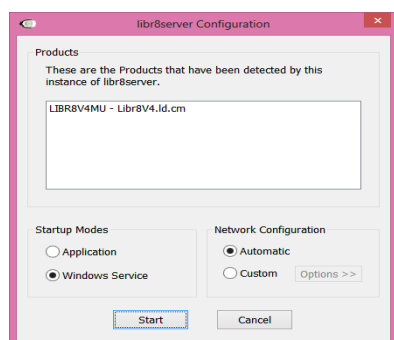
1. Run the file libr\_mus\_install\_4.exe at the Terminal server machine.

2. You cannot run the server file using an UNC path ([\\Server](#)). You must install at the server or use Remote desktop.
3. The Program will be installed by default to C:\Program Files (x86)\LiberRATE\LiberRATE MUS. You can vary the default program files path.
4. On the next dialogue you will see a dropdown box “Install database files only”. Change this to the “Install files for a terminal server”.

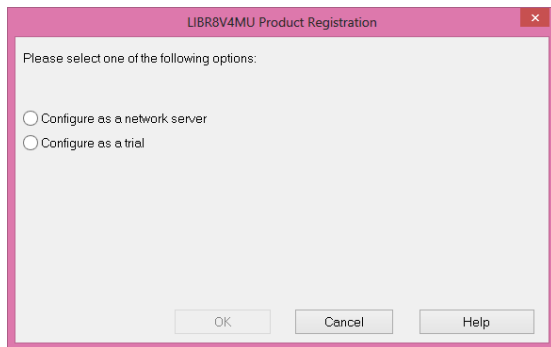


*Note for reinstalling: LiberRATE will not reinstall new databases if it detects a Jobs and Library folder. We do suggest however that you make a backup for security of your data if reinstalling*

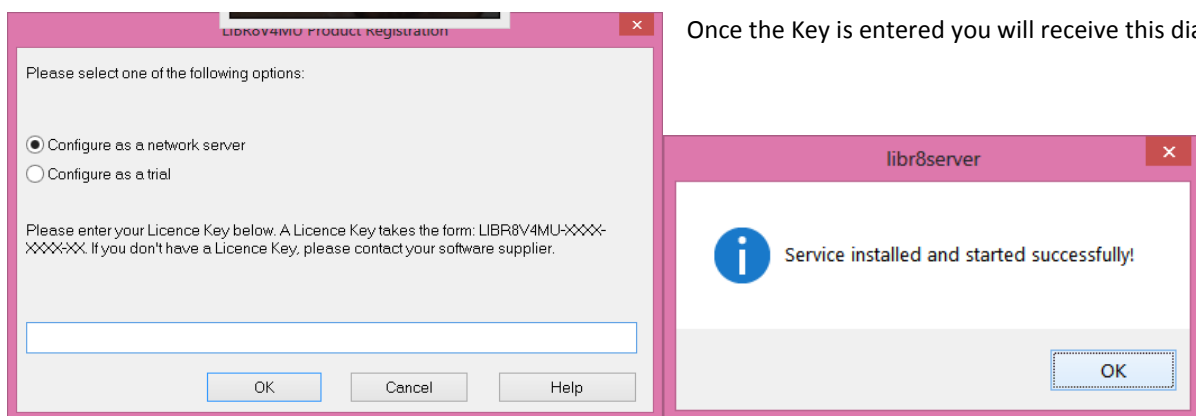
5. The data files containing all user created data will be installed to a folder of the user’s choice on the terminal server machine. It’s best to pre-create this folder (e.g. LiberRATE V4 Data). You may create a new folder at this point using the New folder button on the dialogue box.
6. Choose empty or sample databases. (Existing databases will not be overwritten if you are reinstalling but its best not to take a chance. Please make a backup of the Jobs and Library folders)
7. The installation will complete.
8. The libr8server Configuration box will appear with the Start-up mode selected for Windows service and the Network service as Automatic
9. Press “Start”
10. If this does not appear please start this manually from C:\ProgramFiles\LiberRATE\Server\Libr8server.exe



11. You will now be asked to allow the service to automatically configure your firewall. Accept this
12. The LIBR8V4 Product registration dialogue will appear



13. Choose “Configure as a network server” and enter the key which we have given you. (If you don’t have a key at this point please abort and request a key)



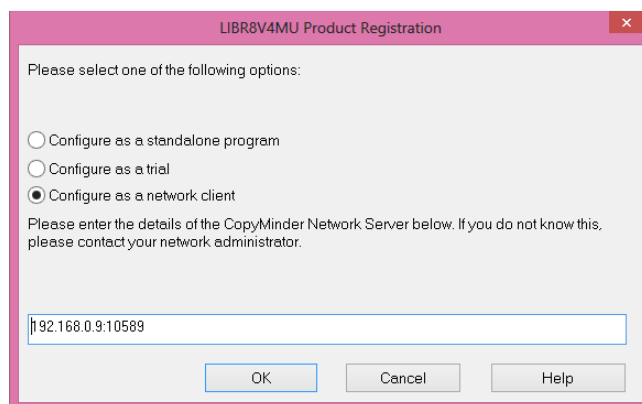
Once the Key is entered you will receive this dialogue

14. Press finish to complete the installation.

If you intend to allow remote login, administrators should now add a shortcut to the desktop of the terminal server pointing to the file “\LiberRATE MUS\libr\_main.exe”. (We deliberately do not add this as a default during our installation to prevent unintended use of the server files when installed on a terminal server.)

15. Run the file “\LiberRATE MUS\libr\_main.exe:- The following dialogue will appear

- You can run this from The <All Programs> list from the start button
- You should add a shortcut to your desktop for each server user



There are now two options for users:-

#### Users running from the terminal server

Your licence will have been set for a maximum number of simultaneous users

Users should use the Terminal server desktop created shortcut to start the program

Users logging in to the terminal server should run the program from the shortcut created on the terminal server.

**Users working on the local environment** should run the program from their client machines.

16. You must now install the multi user client file on each client machine. See below

### **Firewall notes for Option B only**

The installation will configure your firewall and allow access via port 10589 if you have been given a network key for a terminal server. In most cases you needn't need to be concerned with this issue.

If this hasn't been done automatically please allow network traffic at this location.

### **Sharing (for all installations)**

- Shares and read write access should be set up automatically directory where you have installed your data (Jobs and Library databases).

### **Read Write Access (for all installations)**

- This should be set by the program installation but if you are having problems you should check that this is set.

## **SECTION 2 – ONLY IF YOU HAVE INSTALLED OPTION A**

### **CLIENT FILE INSTALLATION**

To be installed on each PC accessing the shared database.

MULTI USER CLIENT INSTALLATION (MUC)

**You will need this file:** libr\_muc\_install\_4.exe (MUC = multi-user client file)

Close all programmes until you only have your desktop showing on your screen.

1. Locate the file which you have downloaded
2. If you have downloaded the programme from our website then it will be in your default download directory usually Documents\downloads
3. LiberRATE will then begin to load onto your computer.
4. You will be asked to accept our **Licence Agreement**.
5. The following screen contains **Installation Notes** (see appendix 2).
6. You will be asked for confirmation to create a LiberRATE directory on your computer. The default position is on the C drive (C:\Program Files or (x86)\LiberRATE) - if you would like it created elsewhere then adjust the programme path by using [Browse].
7. You will be asked to identify the folder on your Server where the Multi-User Server database has been previously installed. Use [Browse (and browse via Network to find this programme and select the LiberRATE MUS folder, click [OK] then [Next].
8. LiberRATE will install and will indicate when it has been installed successfully (usually takes approximately 1 minute).
9. Close down the installation programme by clicking [Finish]. There will now be a "LiberRATE" symbol shortcut on your desktop - Click on this and you will be asked if you wish to activate your licence.

(Alternatively: - Use [Start] > [Programs] > LiberRATE V4 Multi-User Client)

10. You will be asked to choose an installation type
11. Install as a trial and we will upgrade your system before your trial ends if appropriate.
12. If you have supplied with a key or are reinstalling please install as a Standalone and you will be asked for the key. If you don't have your key we will email it to you.

### **Activation**

You will need to activate the program before it will run.

### **If you are already registered**

If you are already registered please request your original key and install as a Standalone when asked.

### **If you are installing for the first time**

If you are installing for the first time please install as a Trial

You will be asked to register and a verification email will be sent to you. Once you have verified your email address by clicking on a link sent to you your program will start. You are now ready to **Login**



## **Login**

To start LiberRATE double-click on the green icon on your desktop. Your system is delivered with the following user information set in so use these to login for the first time.

(If you have converted your databases your logins will be as per your V3 system)

User Name	Superuser
Password	Demo

You can add yourself or others by this using the Menu [Admin]> [Admin Program] and add/delete authorised users as appropriate from the menu if security is an issue. We would recommend at least having your own login name as it is easier to remember than “superuser”.....

## **Check your version**

You can check version numbers Installation paths etc via the Help/About accessed from within the program and then the Information button shown on that dialogue.

For further information see **User Levels and Security**.

## **Licence agreement**

Use of the system implies your agreement to all copyright conditions and full agreement to the licence conditions for this software. A copy of the licence agreement is in the online manual and you agreed to these conditions at an earlier stage of the installation.

## **SUPPORT**

Support on LiberRATE is available to you on an unlimited basis. We can offer support by telephone and online.

Please contact LiberRATE Estimating by:

Tel +44 + 01252 795030

Email: [info@libr8.co.uk](mailto:info@libr8.co.uk)